



Laigh Hills Public Park Dunblane Strategic Landscape Masterplan



Connon Design

Landscape Architecture + Urban Design

Connon Design

Landscape Architecture + Urban Design



We also work with technical specialists -
Ecologists & Engineers
(JDC ecology & Millard Consulting)

Commissioned Autumn 2013

Strategic Landscape Masterplan

Commissioned Autumn 2013

Strategic Landscape Masterplan

Purpose is to take a step back in order to take two steps forward in a better direction.

Commissioned Autumn 2013

Strategic Landscape Masterplan

Purpose is to take a step back in order to take two steps forward in a better direction.

This is more likely to:

- A** - Achieve what local people *actually* want to see happen
- B** - Make more prudent & wise use of money
- C** - Provide **evidence to attract FUNDING**

The approach we take is different to more
traditional approaches to
'Masterplanning'

Design is about:

People

Place

Problem solving in the built & natural
environment
(Context)

We have been working over the last few weeks to better understand Laigh Hills in its various contexts

Combination of technical desk studies and Field work.

We have been working over the last few weeks to better understand Laigh Hills in its various contexts

Combination of technical desk studies and Field work.

We have been talking with:

Key local people

Local and national stakeholder organisations

Local Schools

We now need to talk with YOU

LOCAL PEOPLE

Master planning as a process rather than a product.

Place-making as a key Scottish Government Policy Objective.

Some Key elements of a masterplan (amongst other things):

Safe & Secure /Well connected

Aspirational

Adaptable

Sustainable/Resource efficient

Distinctive

Inclusive & Accessible

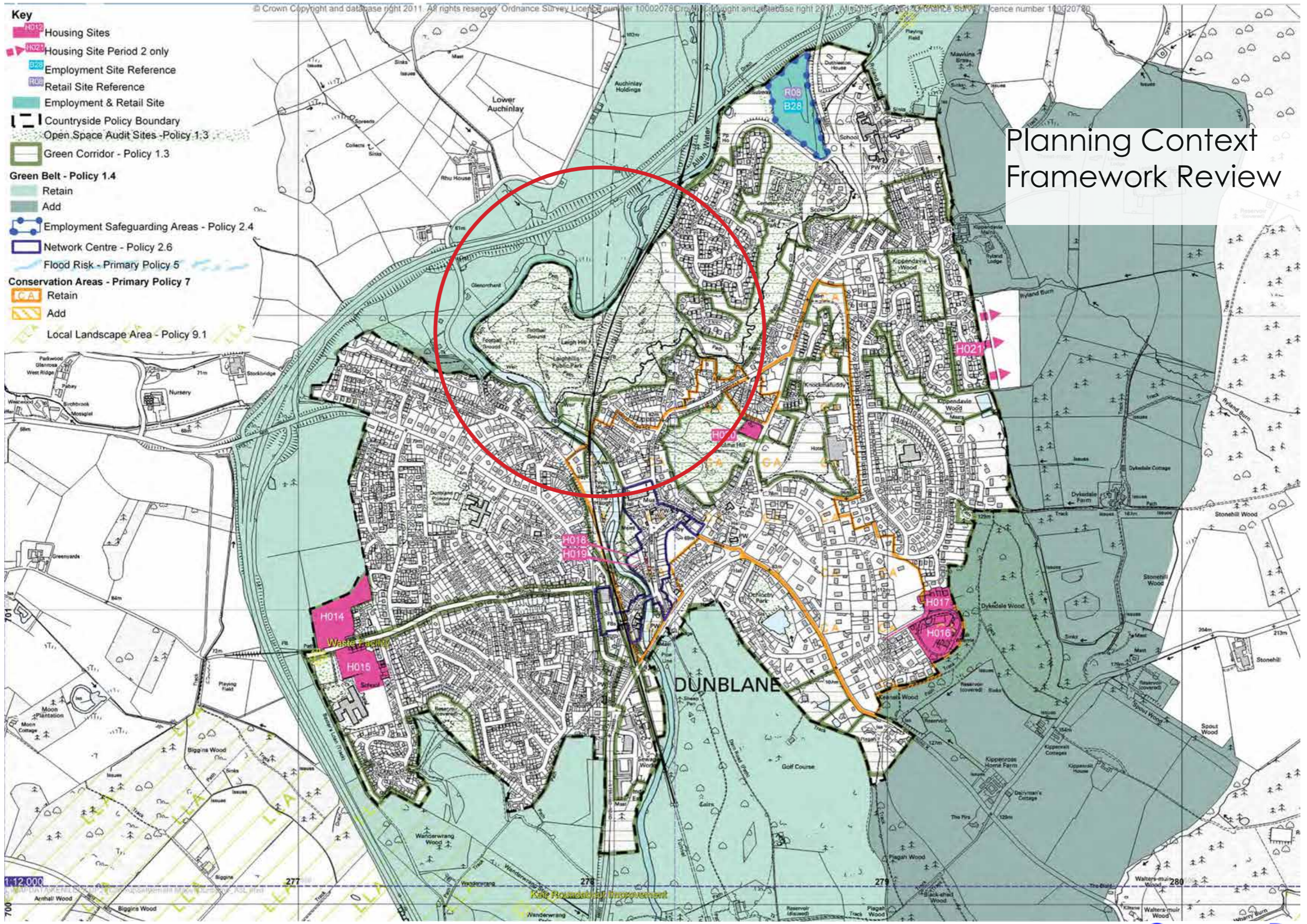
A masterplan should take a **long-term approach & should include a plan for delivery**

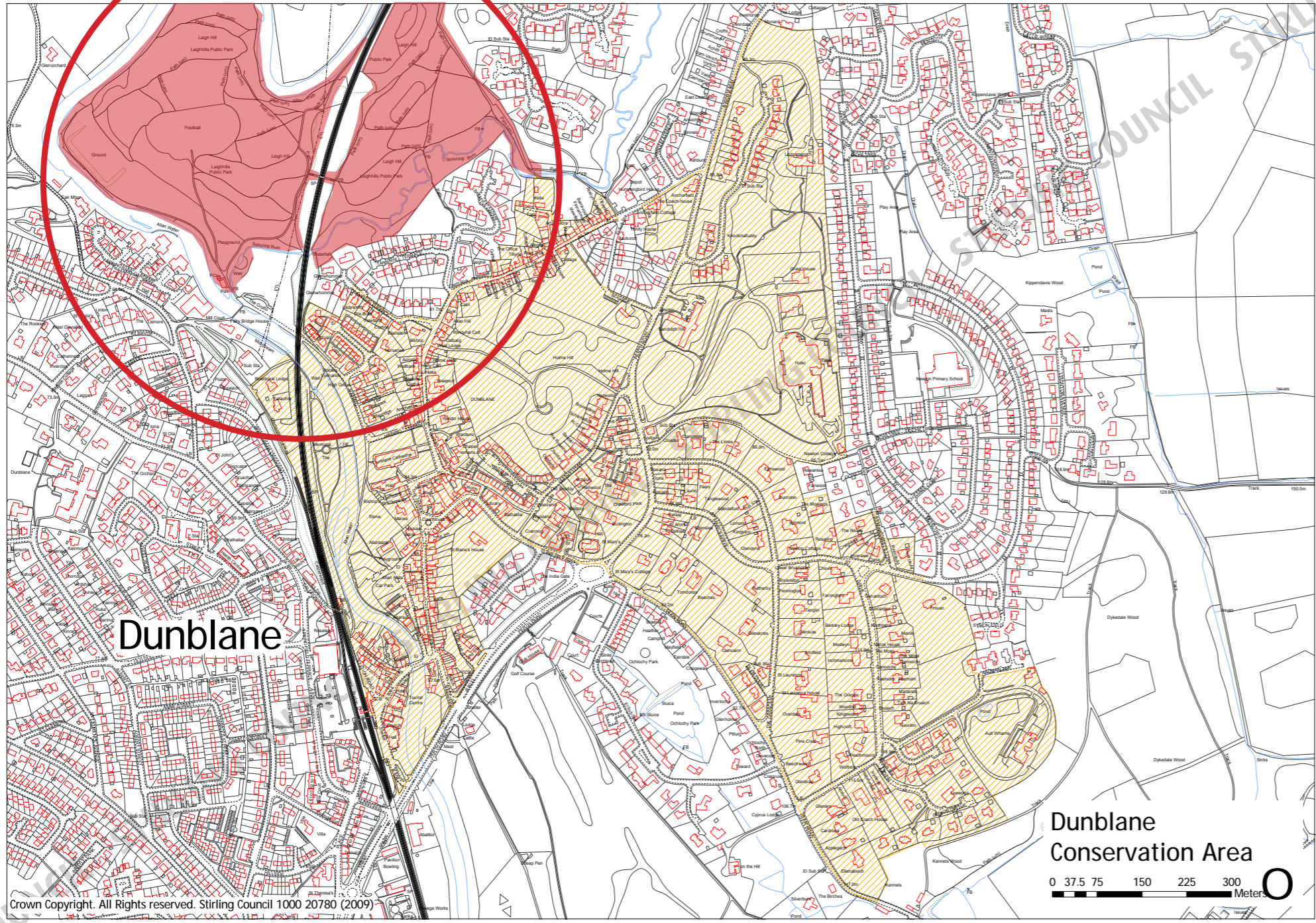


Aerial Photography Review
Google Earth - 2005

- Key**
- H012 Housing Sites
 - H024 Housing Site Period 2 only
 - B228 Employment Site Reference
 - R08 Retail Site Reference
 - Employment & Retail Site
 - Countryside Policy Boundary
 - Open Space Audit Sites - Policy 1.3
 - Green Corridor - Policy 1.3
 - Green Belt - Policy 1.4
 - Retain
 - Add
 - Employment Safeguarding Areas - Policy 2.4
 - Network Centre - Policy 2.6
 - Flood Risk - Primary Policy 5
 - Conservation Areas - Primary Policy 7
 - Retain
 - Add
 - Local Landscape Area - Policy 9.1

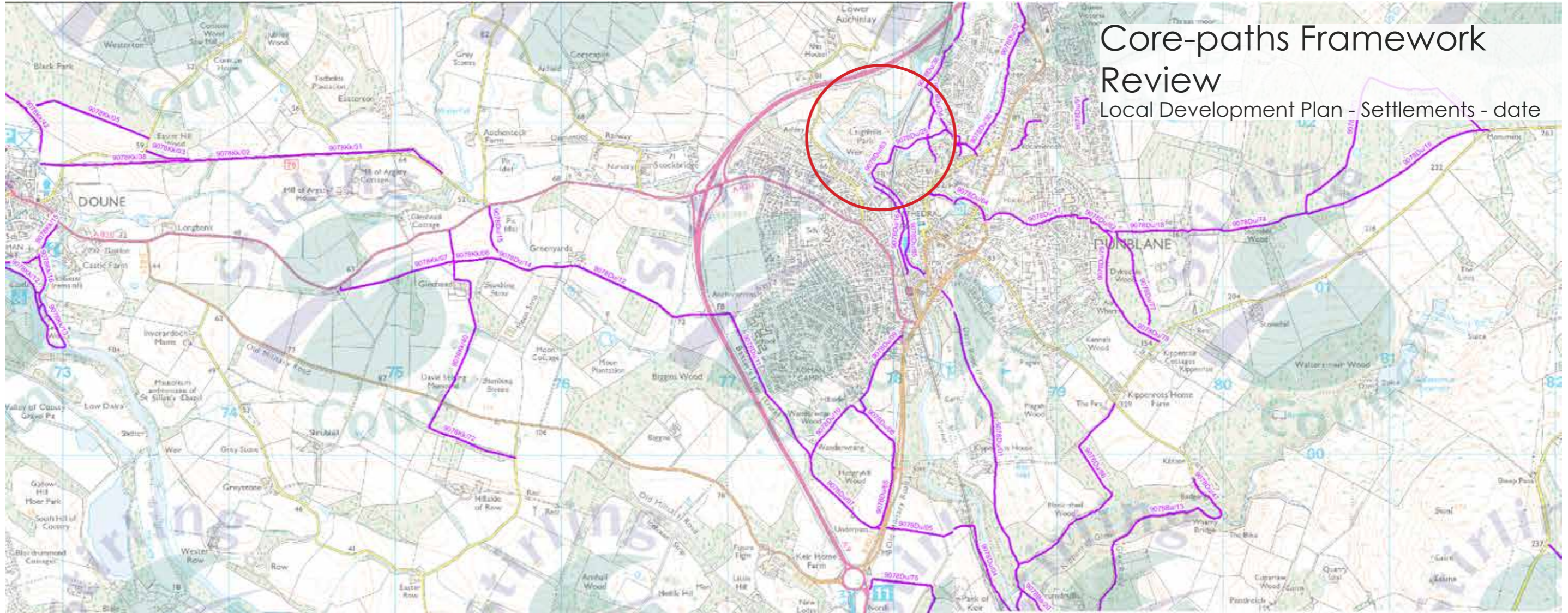
Planning Context Framework Review





Planning Context Review
Conservation Area

TPO's - none present



Core-paths Framework Review

Local Development Plan - Settlements - date

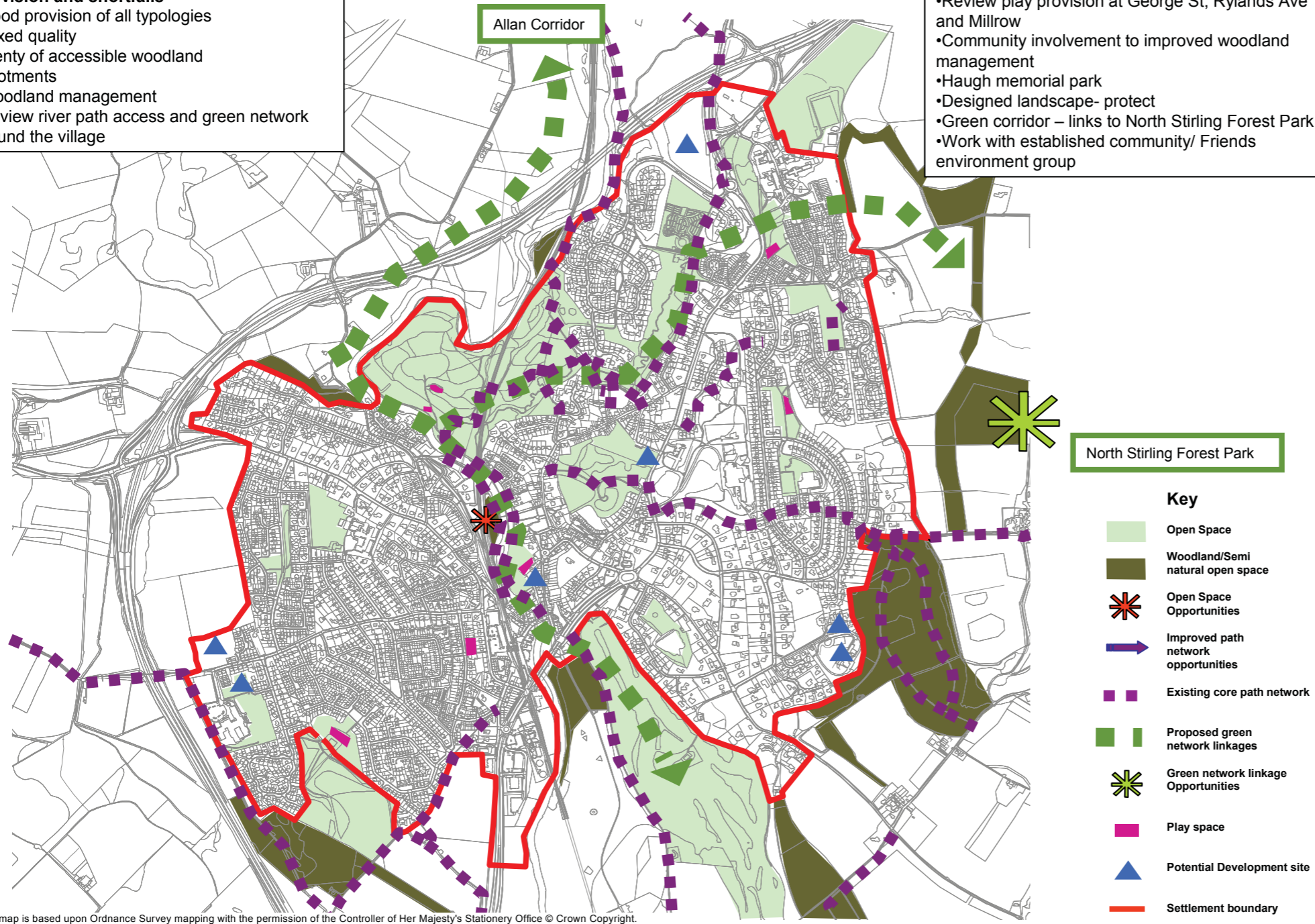
Open Space Strategy Review

Provision and shortfalls

- Good provision of all typologies
- Mixed quality
- Plenty of accessible woodland
- Allotments
- Woodland management
- Review river path access and green network around the village

Opportunities

- Review play provision at George St, Rylands Ave and Millrow
- Community involvement to improved woodland management
- Haugh memorial park
- Designed landscape- protect
- Green corridor – links to North Stirling Forest Park
- Work with established community/ Friends environment group



This map is based upon Ordnance Survey mapping with the permission of the Controller of Her Majesty's Stationery Office © Crown Copyright. Unauthorised reproduction infringes Crown copyright and may lead to prosecution or civil proceedings. Stirling Council. Licence No. 100020780. 2011.



Historic Context Review

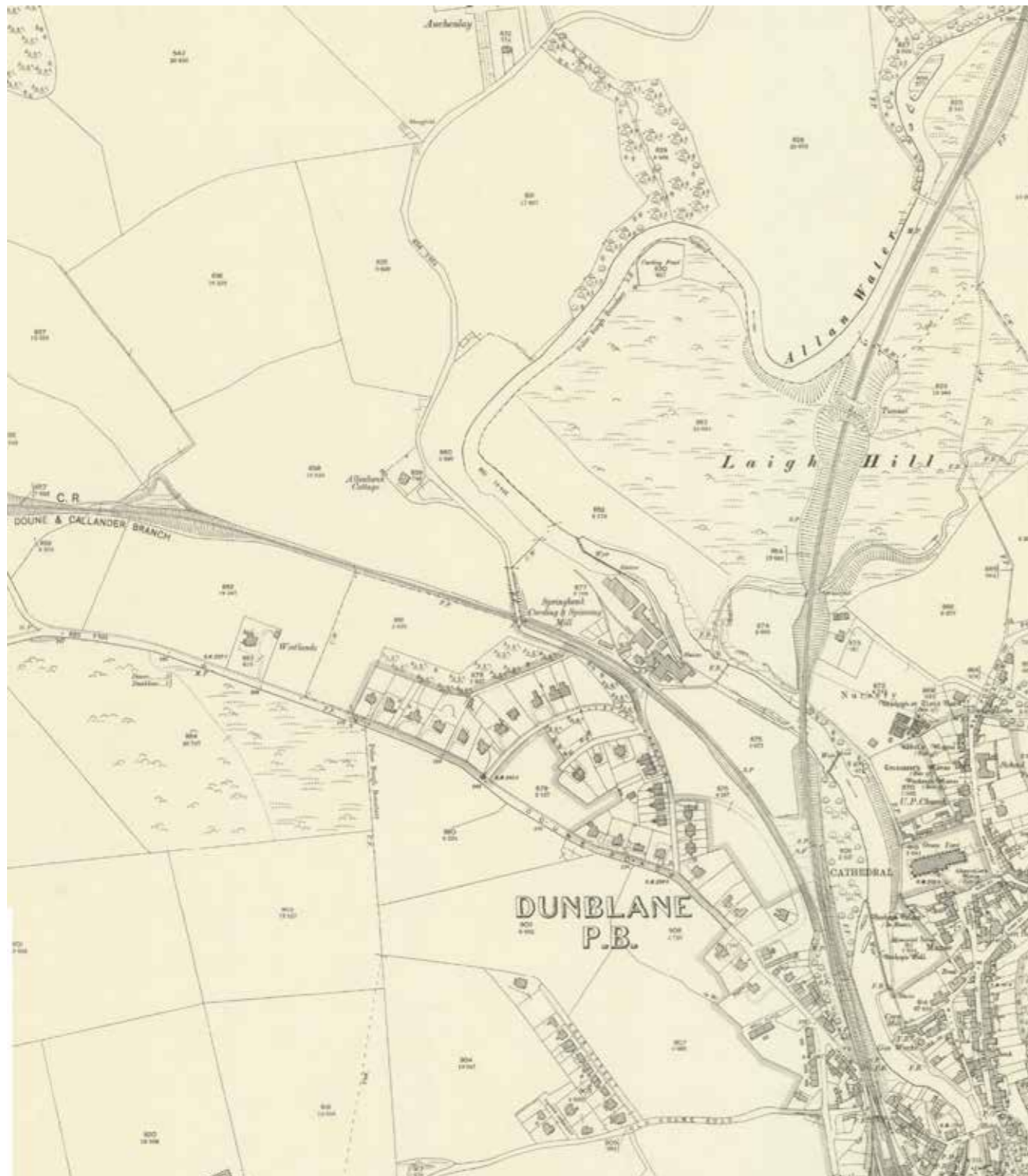


Aerial Photography
Circa 1950

Existing Vegetation Appraisal 2010 -



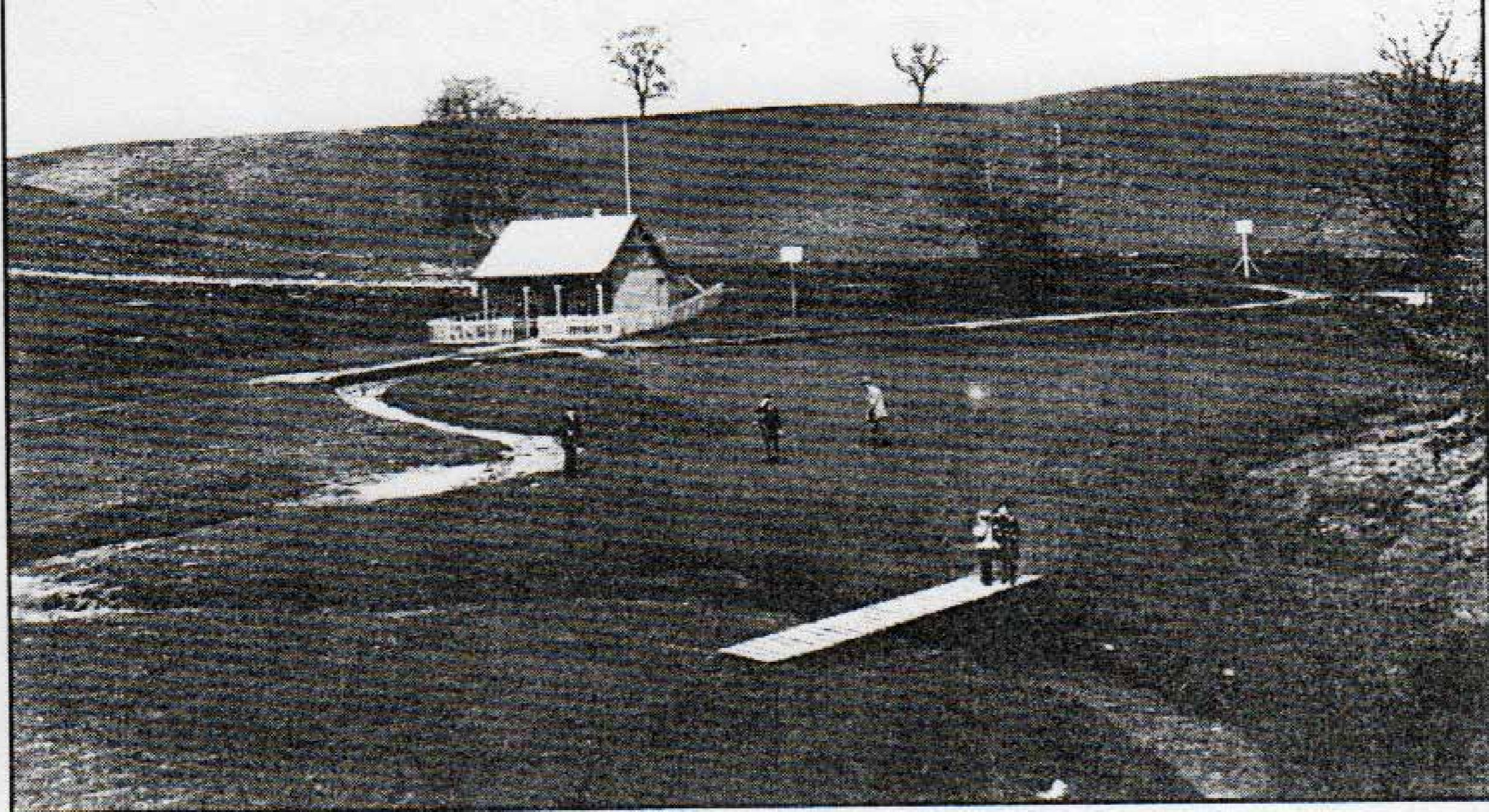
Historic Context Review



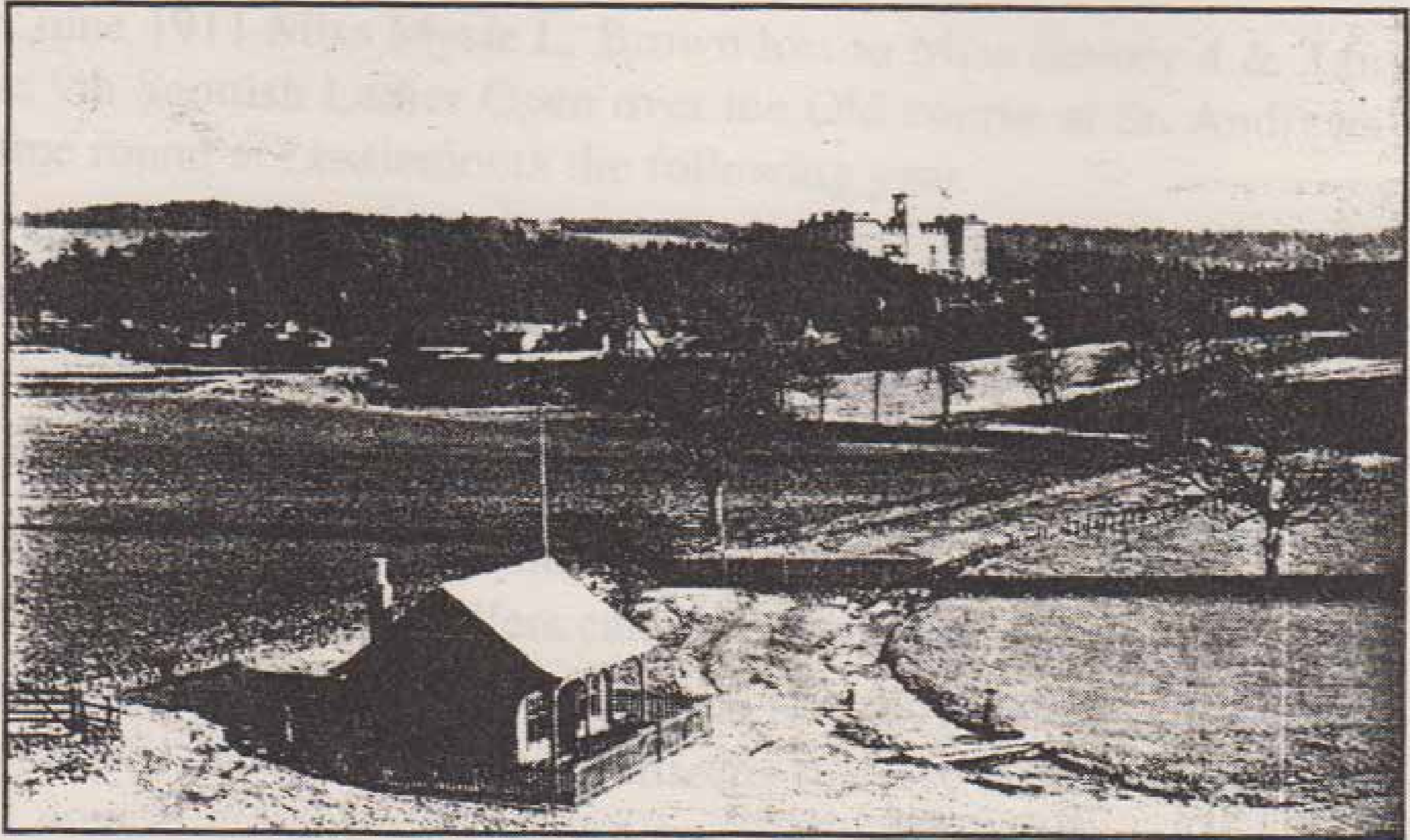
OS map Circa 1888

Golf Course, Dunblane.

8552 17



This photograph, taken in 1918, shows Jim Reid on the left of the 18th green.

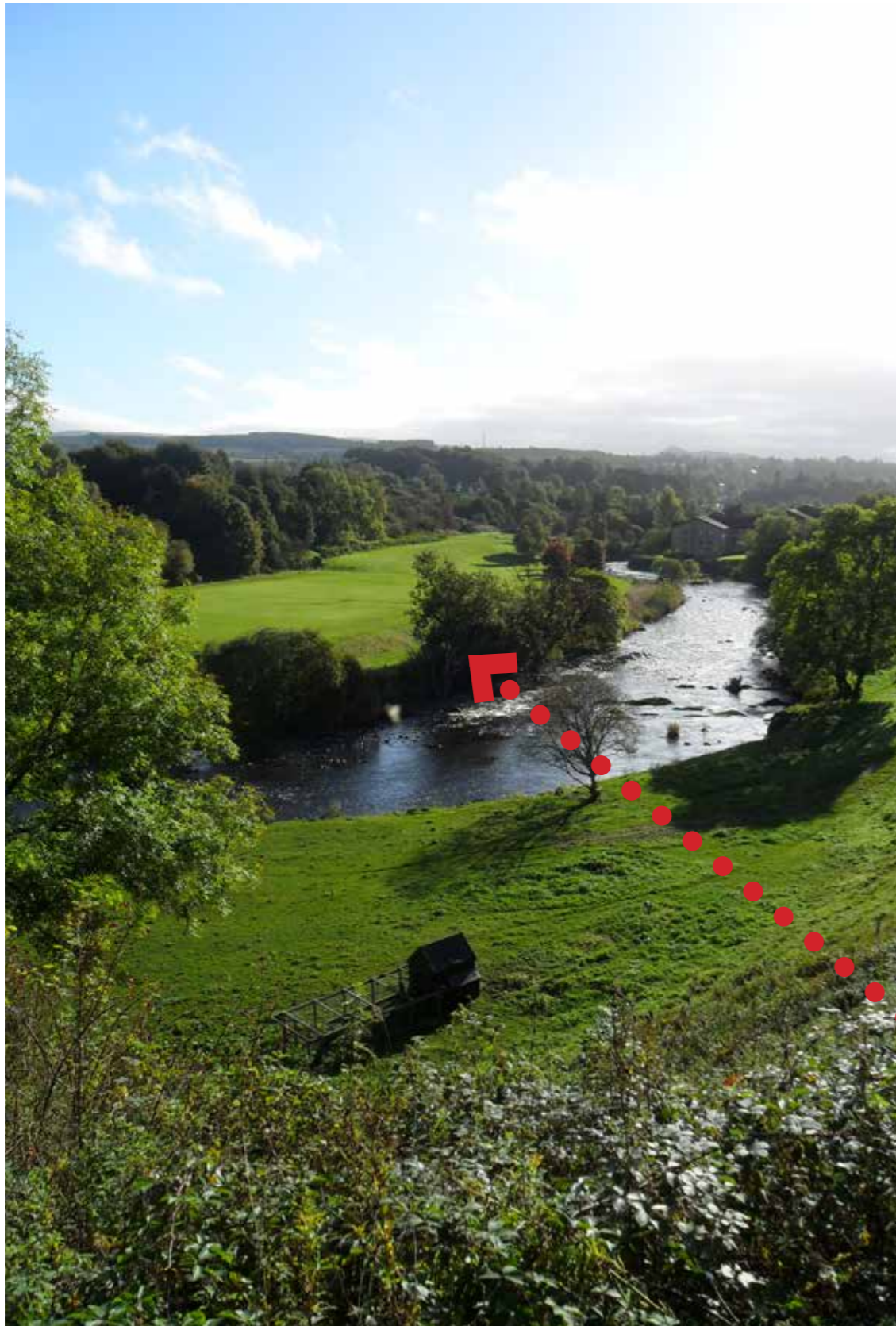


Clubhouse on Laighills

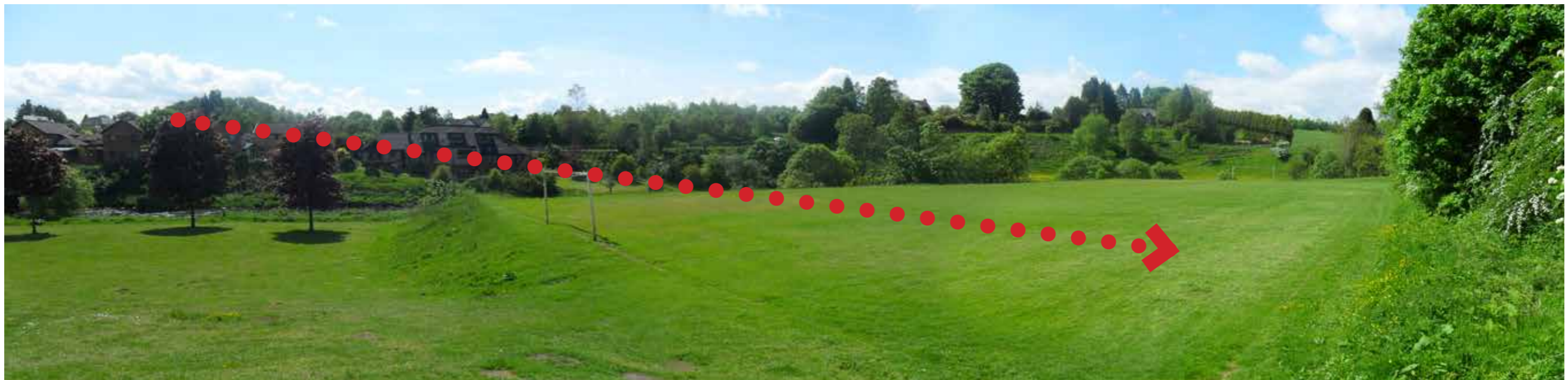
Existing Services Review



Visual envelope & Key Views Appraisal






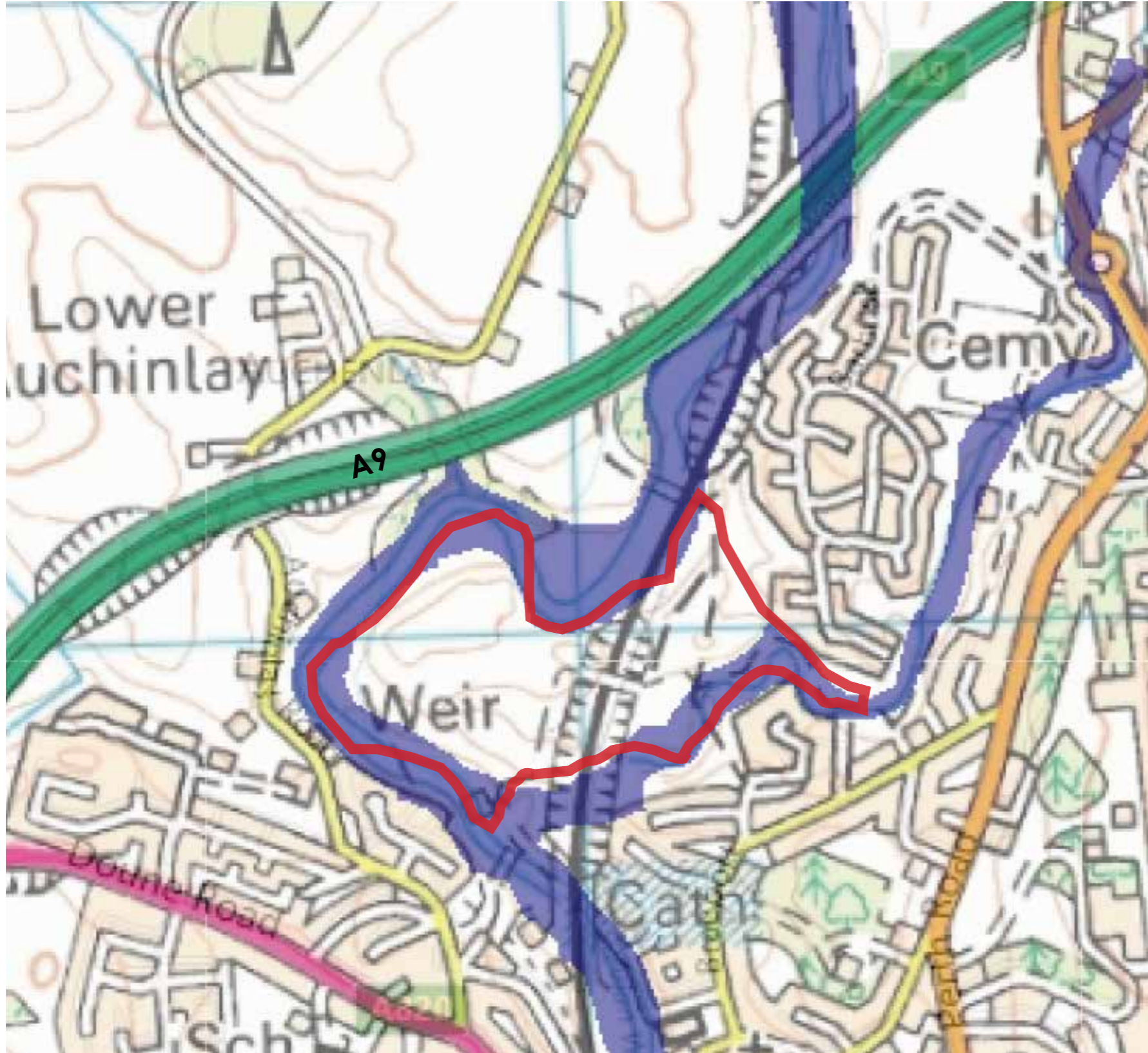
Visual envelope & Key Views Appraisal





Visual Appraisal :
 General visual envelope with long distance views & National landmarks (from hill top NN778018)

-  Average height & typical view point location
-  Typical / average visual envelope
-  Long distance views from Key hill top only



Hydrology & Flooding Review



Aerial Photography Review

Google Earth - 2005

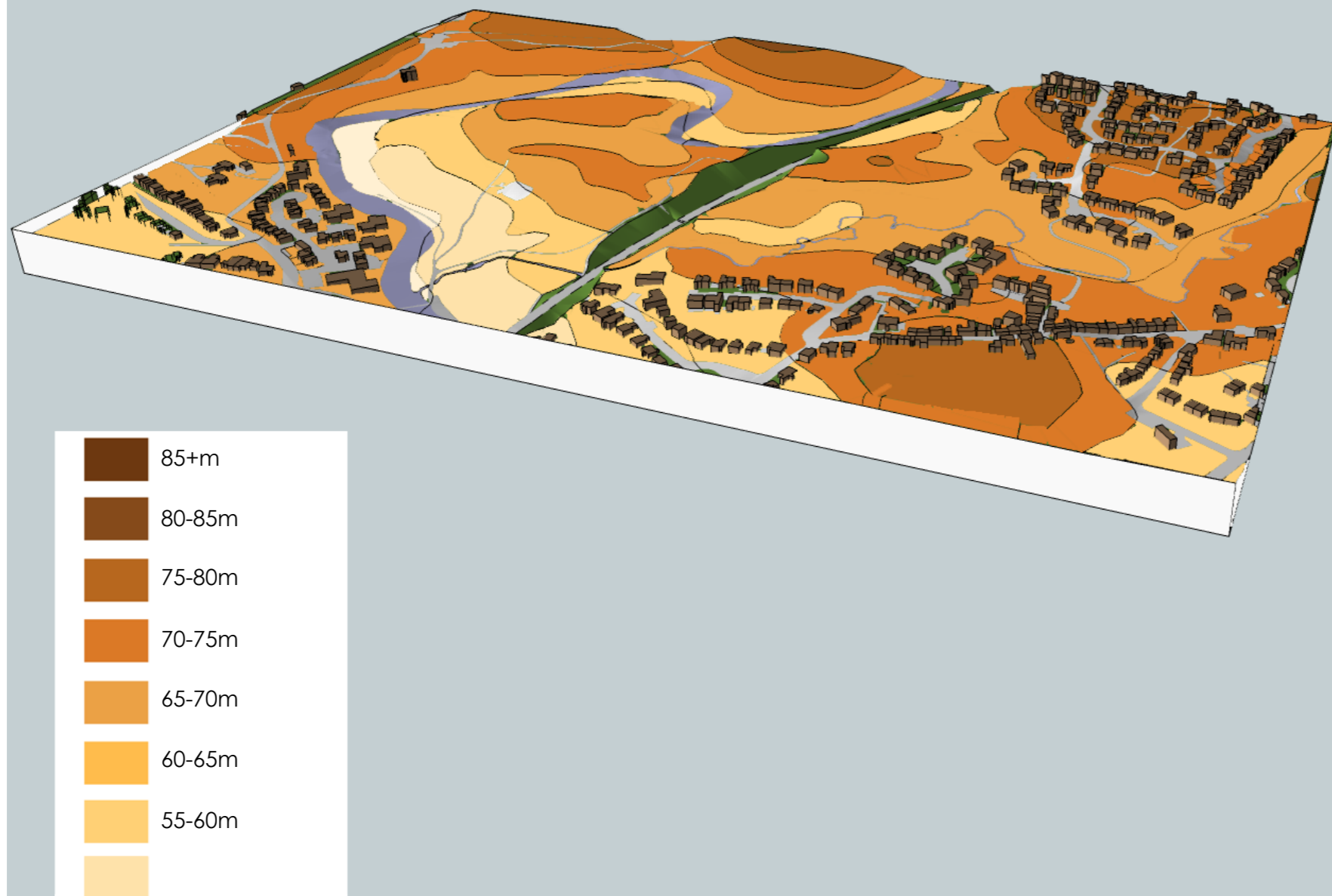


Landscape Character Appraisal



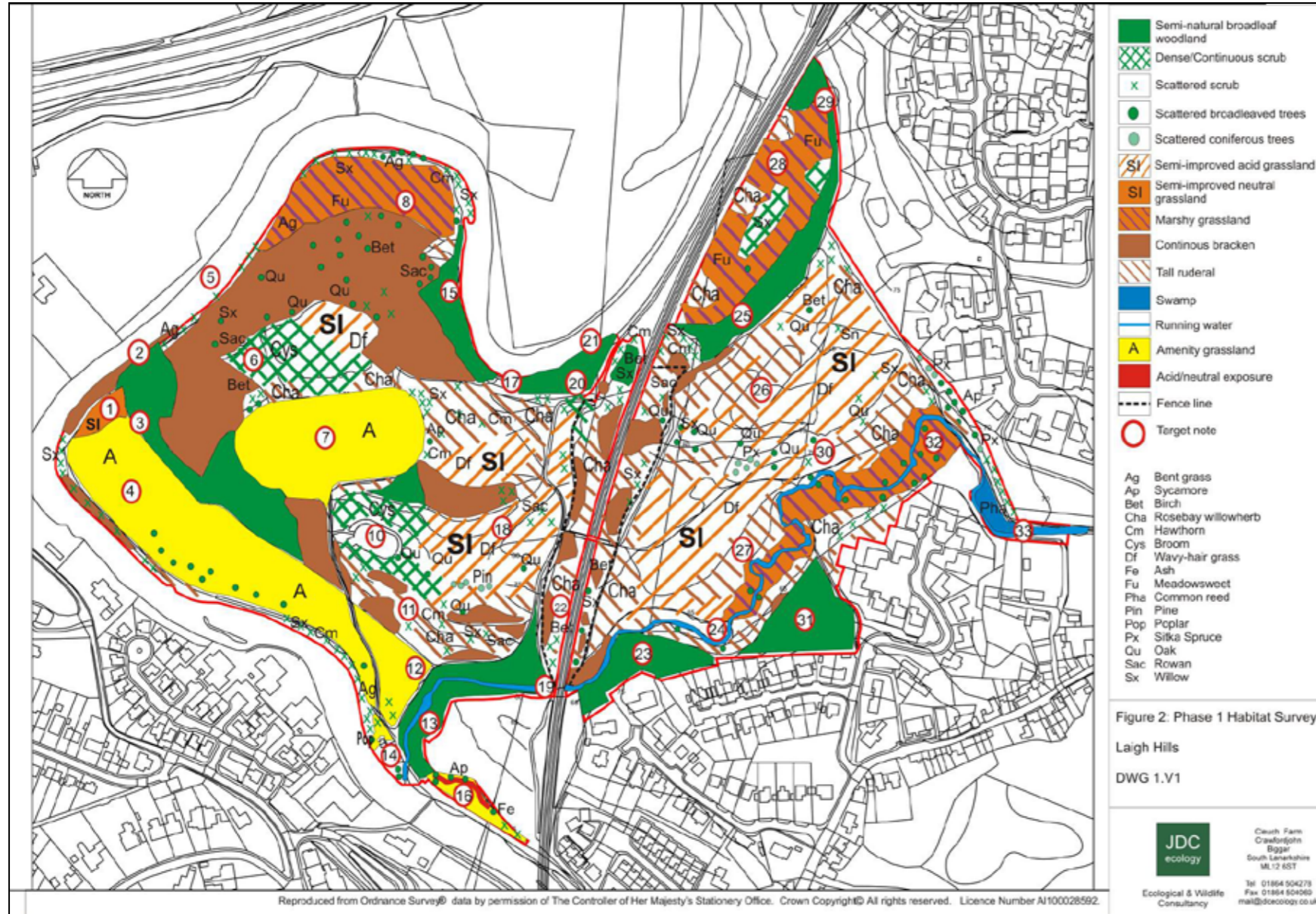
- | | | |
|--|---|---|
|  Riparian semi-natural woodland & incised river valley with steep sided slopes. |  Local small scale floodplains and associated wetland areas. |  Formal riverside designed parkland landscape within steep sided river valley enclosure. |
|  Predominantly rough grassland over rolling glacial-fluvial hills, drumlins & features with some semi-natural trees & woodland regeneration, bracken and ruderal mix. |  Allotments & productive gardening area within natural wooded enclosure & setting. |  Low design quality amenity landscape with some native structure planting. |
|  Amenity recreation grounds/pitches within riverside peri-urban & semi-countryside setting. |  Formal children's play area within wider formal recreation parkland. |  Railway communications corridor with associated infrastructure and character (none electrified) |

Land-form Appraisal



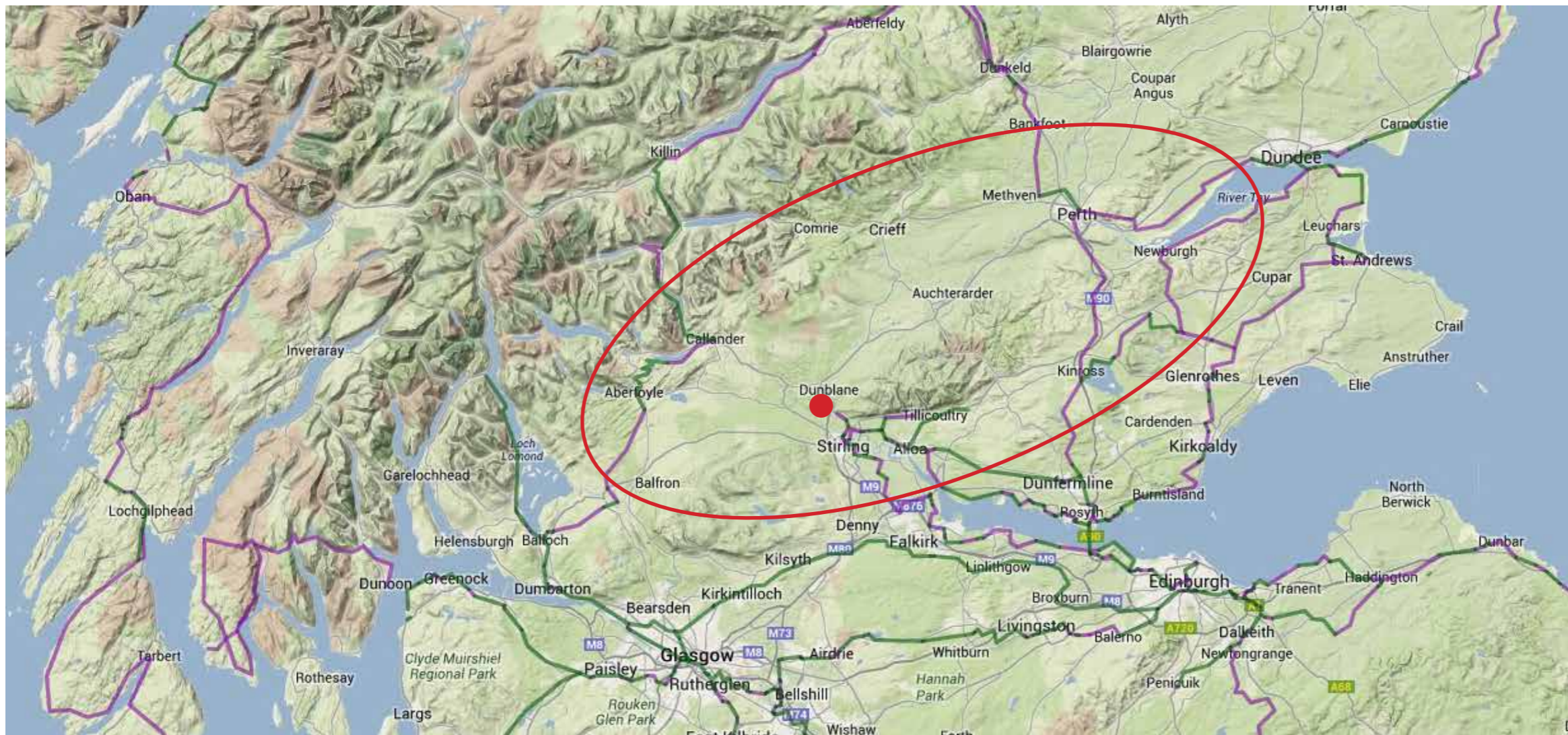
Data from OS 1:50,000 landranger series only

Existing Ecology - Extended Phase 1 Habitat Appraisal 2013-14

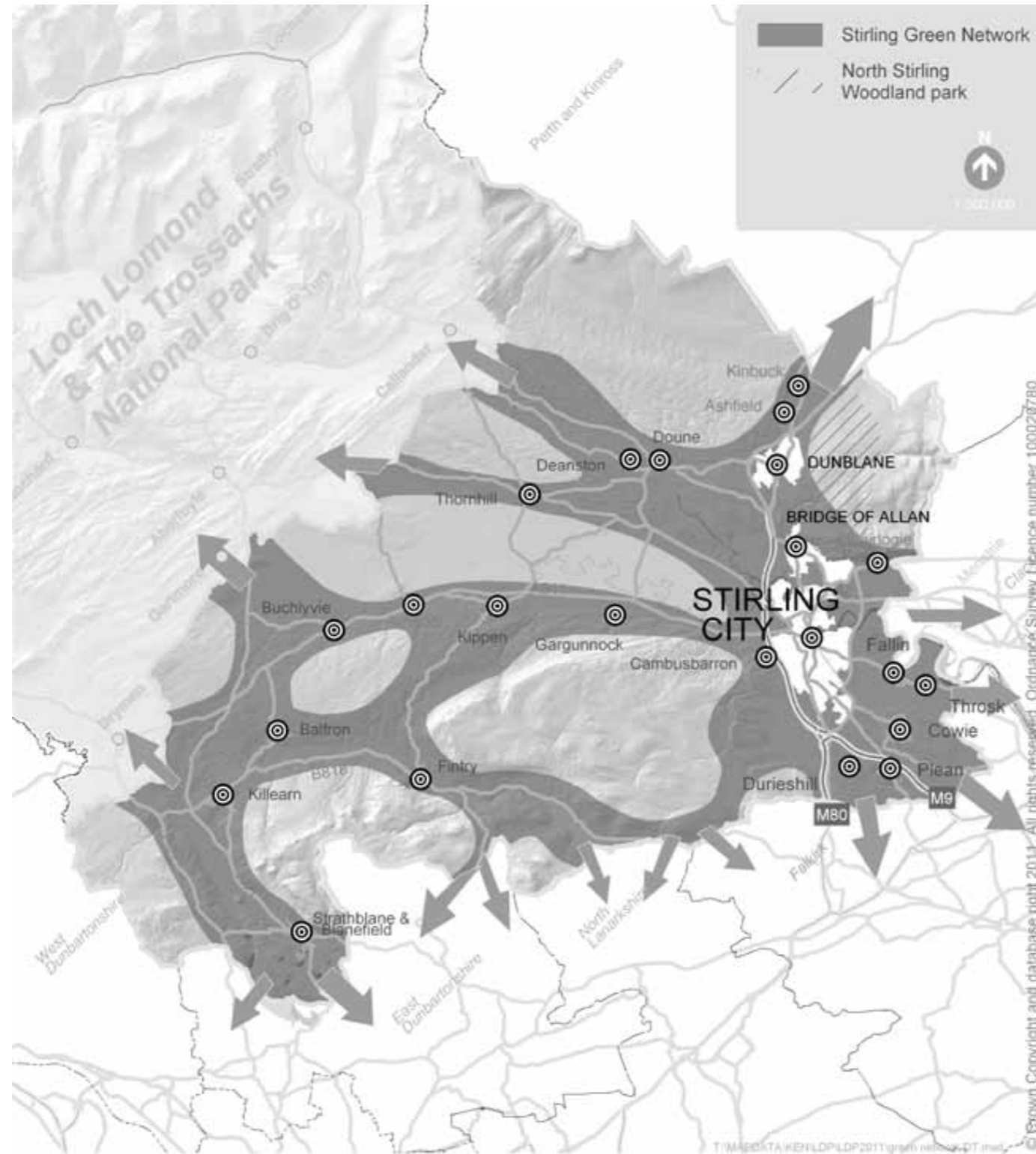


connon/Laigh Hills/180114
 VERSION.2
 JDC Ecology Limited

Framework: Cycling Routes Review - Sustrans Existing Map Network



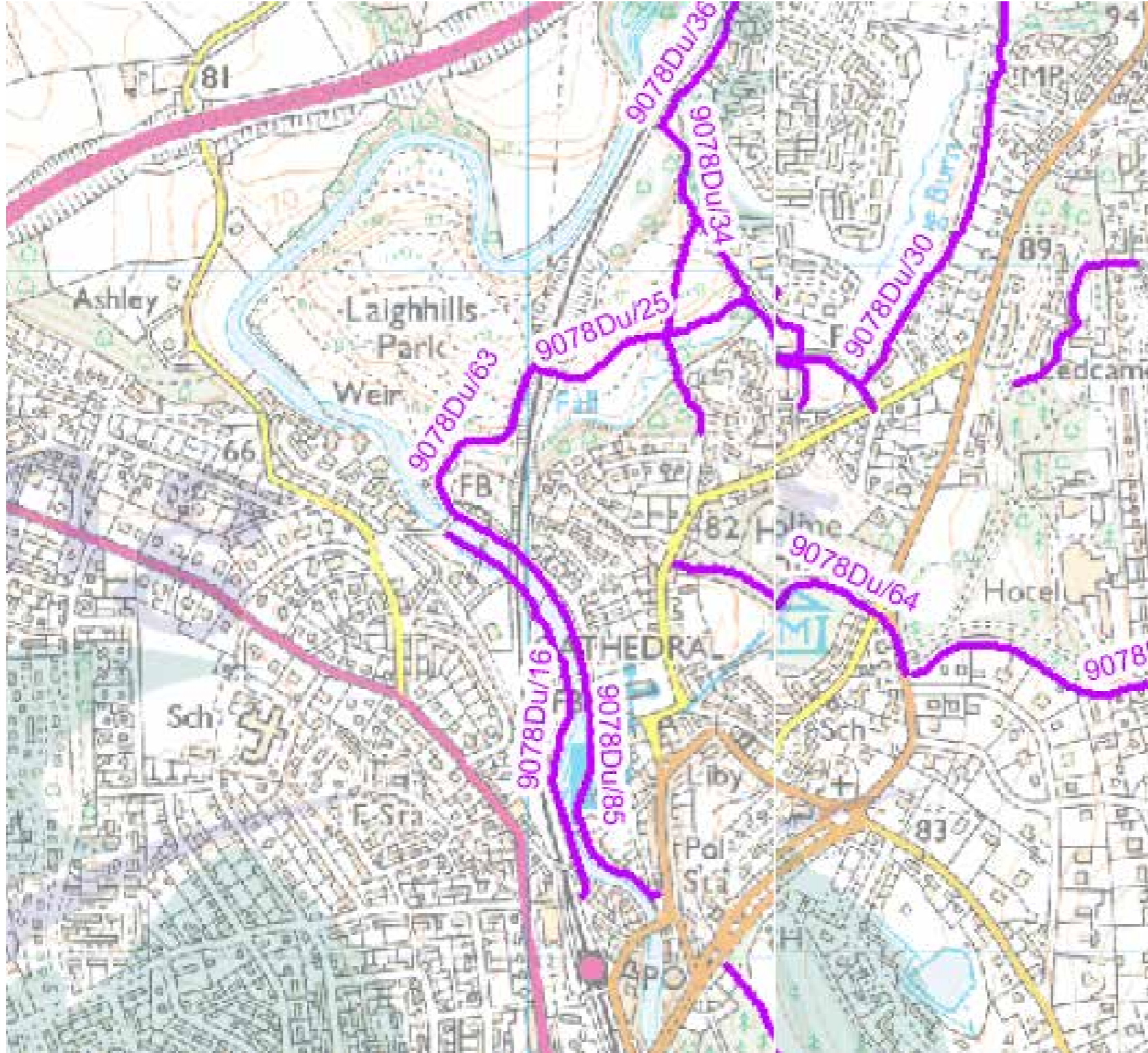
Plan 2 Schematic illustration of Green Network



Framework: Central
Scotland Green Network
(CSGN) SG02 - ref
'Draft supplementary
Guidance 02
Green Infrastructure: Green
Network & Open Space'



Framework: Cycling Routes Review



Framework: Core Paths Review








Framework: Scale - Phase 1 Walking Isochrone & Proximity to Town Centre





Access & Public Transport Connections

-  400m - approx. 5 min walk
-  800m - approx. 10 min walk
-  Bus Stops
-  Car-parks
-  Railway Station

Existing Play Facilities Review:









Some Main themes so far:

1. Paths Improvements
2. Connections/Bridges/Gateways
3. Sports Drainage & Facilities
4. Toilets
5. Views, Habitat & landscape management
6. Shelter/structure
7. BBQ area
8. Play area improvements
9. Restoration of existing features BMX & Paddling Pool etc.

We need to know:

Project - Vision?

Aims & Objectives for the project?

Your proposed Needs & Aspirations?

What are **Your** Priorities?



Thank You

Any Questions Please?

www.surveymonkey.com/s/JLKQTR9