

Holmehill Community Buyout
**Green Walks in
 Central Dunblane**



Including Holmehill,
 Knockmafuddy Woods,
 Laighhills, Ochloch Park,
 Hydro Grounds and Riverside Walks

This leaflet has been produced by Holmehill Community Buyout to help residents of and visitors to Dunblane enjoy its central green spaces with their rich history, flora and fauna.

Holmehill Community Buyout is a local community group based in Dunblane.

Its aims are:

- To buy Holmehill for use by the community of Dunblane.
- To ensure that the protection presently afforded to Holmehill is maintained.
- To ensure the sustainable development of Holmehill.

Holmehill Community Buyout is the campaigning name of Holmehill Ltd. (Scottish Charity No SC036988). Holmehill Ltd. is a company registered in Scotland No 279947.

www.holmehill.org

Holmehill, the green heart of Dunblane

This leaflet has been produced with grant support from the Dunblane Hydro Hotel and Scottish Natural Heritage.



Scottish Natural Heritage
 All of Nature for all of Scotland



DOUBLE TREE
 by Hilton
 DUNBLANE HYDRO

Map and Design: Heather Christie

Photography/images: Richard Bland, Alan Booth, Caroline Crawford, George Logan, SNH, Phill Tebbutt, Andy Wheildon
 Walks leaflet © Holmehill Ltd.

For more Dunblane Walks

Dunblane Heritage Walk is produced by the Dunblane Local History Society and is a short stroll through 2000 years of history.

Dunblane Community Paths leaflet is produced by Stirling Council, and shows some longer walks from Dunblane, all starting from the Cathedral.

Annual events in Dunblane's green spaces

Dawn chorus bird watch	Early May
Doune and Dunblane Fling	Last weekend of May
Hydro 7.5 mile Roadrace	Late May
Family Funday	Second Sunday in August

Useful links

For the latest news of Holmehill events and wildlife

www.holmehillblog.org

For Dunblane information

www.dunblaneweb.co.uk

www.dunblanefling.com

www.dunblanehydrohotel.com

For Stirling Council information

www.stirling.gov.uk



Holmehill is the *green heart* of Dunblane. It is the *dun* – fortified hill – of St Blane, a Celtic missionary who founded Dunblane in 602 AD.

Many of the mature trees you see here are likely to have been planted as landscaping in the grounds of the mansion house which stood on the hill from 1820 until 1980. Its owners included the Donaldsons, who owned a major shipping line, and the Templetons (of Templetons Carpet factory near Glasgow Green). A plaque on the wall behind Dunblane library commemorates Holmehill.

'I remember the garden around Holmehill House – it was the most beautiful garden.' Willy W.

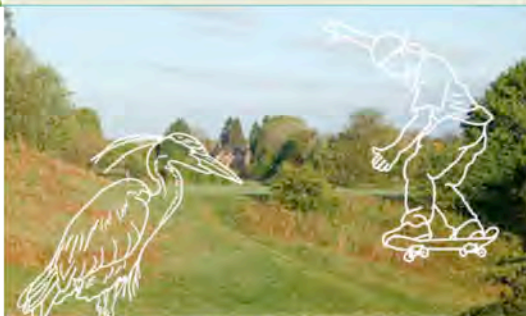
Lime, beech and sweet chestnut line the main path. Native species including oak, holly, yew, birch, elder and ash are found across the hill.

'Good trees for conkers.' Bob G.

On Holmehill you can find roe deer, bats and many species of birds, including chiff chaff, willow warbler, wren, blue tit, long tailed tit, coal tit, tawny owl, great spotted woodpecker, tree creeper, sparrowhawk and buzzard.

The rookery here has around 95 nests and is often a busy, noisy place. It is said that Bonnie Prince Charlie remarked on the rookery when he rode through Dunblane in 1745.

Find the latest news at www.holmehillblog.org



The Laighhills

Here you will find something for everyone; a skatepark, playpark, a network of paths and a variety of wildlife, particularly in the wetter areas alongside the Allan Water and Scouring burn. In 1828 a well house was erected here for those who came to Dunblane to 'take the waters'.

Riverside Walks

Enjoy a relaxed stroll either side of the Allan Water, including the Memorial Park, Bleaching Green and the 'Faerie Bridge'. Look out for herons, dippers and goosanders. Daubenton's bats hunt insects over the water at dusk in summer.

Ochloch Park

Enjoy a stroll around this tranquil park with its mature trees and beautiful pond, home to ducks and swans. The pond has been cleaned out and upgraded by local volunteers.

Knockmafuddy & Hydro grounds

Knockmafuddy is a small tealued area of woodland, to the north of the Hydro hotel, which has a mix of managed parkland and woods.

Text in italics are memories from Dunblane residents who participated in the Holmehill Oral History Project.

In **spring** enjoy snowdrops, celandines and bluebells in the woodlands. Migratory birds, including sand martins, swallows and swifts arrive from the south and start nesting. Watch buzzards soaring overhead.

'The children used to roll their eggs down the hill at Easter time' Bob G.

Look for pipistrelle bats catching insects at dusk near trees. Resident birds and **summer** visitors are in full song, breeding and nesting. Soon after, baby birds start fledging. Bumblebees abound and painted lady butterflies may arrive after their migration from North Africa. Bees and butterflies can be found feeding on nectar-rich flowers.

'We used to have picnics and meet folk up there.' Irene F.

Swifts, swallows and sand martins depart as the leaves begin to colour for their **autumn** display. Brambles fruit on Holmehill and in the Laighhills.

'I remember running, running around in the meadows and watching the deer.' Rowan W.

In winter, berries, including holly and rowan, provide food for **winter** visitors, as well as resident birds such as blackbirds. Look out for redwings, greenfinches, bullfinches, waxwings and fieldfares.

'...the sight of buzzards wheeling overhead, the sound of woodpeckers drumming and the spectacular rookery.' Malky, Janet and Maisie M.





Green walks in Central Dunblane

All areas can be reached within 20 minutes walking, but there is plenty to see on a more leisurely stroll. Many of the paths are accessible by wheelchair and buggy, but some are hilly and can be muddy.



Blossom by the Cathedral

Brambles at Holmehill

Trees at Holmehill

KEY	
	Accessible paths (suitable for wheelchairs/buggies)
	Rougher paths: wear stout shoes
	Parking
	Public toilets (not 24 hrs)
	Post office
	Cafe
	Public house
	Tennis court
	Play park
	Skate park
	Football pitch
	Golf course

Useful Information

Enter **Holmehill** from the gate lodge where Smithy Loan meets Perth Road, opposite Dunblane Hydro, or from Braeport, between the two white houses just up from the community centre.

Access **Laighhills** from the firm riverside path, or from a hilly path from Ramoyle.

Knockmafuddy is accessed from the **Dunblane Hydro Hotel**, or from Ledcameroch Gardens.

Ochloch Park is accessed from the Glen Road or Ochloch Park.

The riverside paths on either side of the **Allan Water** are accessible from the station and the Cathedral.

Ramoyle was originally a separate village. Some of the weaver's cottages date from the 18th century.

Building of the **Cathedral** began in the 12th century. It was restored in the 1890s.

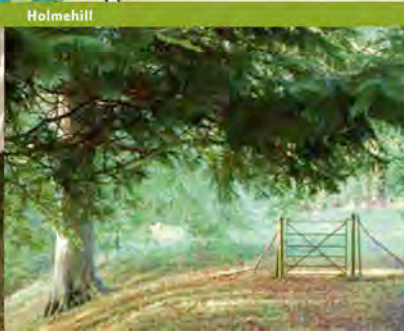
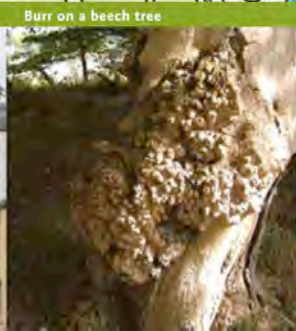
Dunblane Museum inhabits the 17th century Dean's House.

The **Leighton Library** houses the 17th century collection of Leighton, Bishop of Dunblane, and some of the rarest books in the country.

Scottish Churches House is an ecumenical residential centre with a programme of events open to the public.

Painted lady

angelica



Holmehill frames Kirk Street

Burr on a beech tree

Holmehill

Dunblane Hydro Hotel